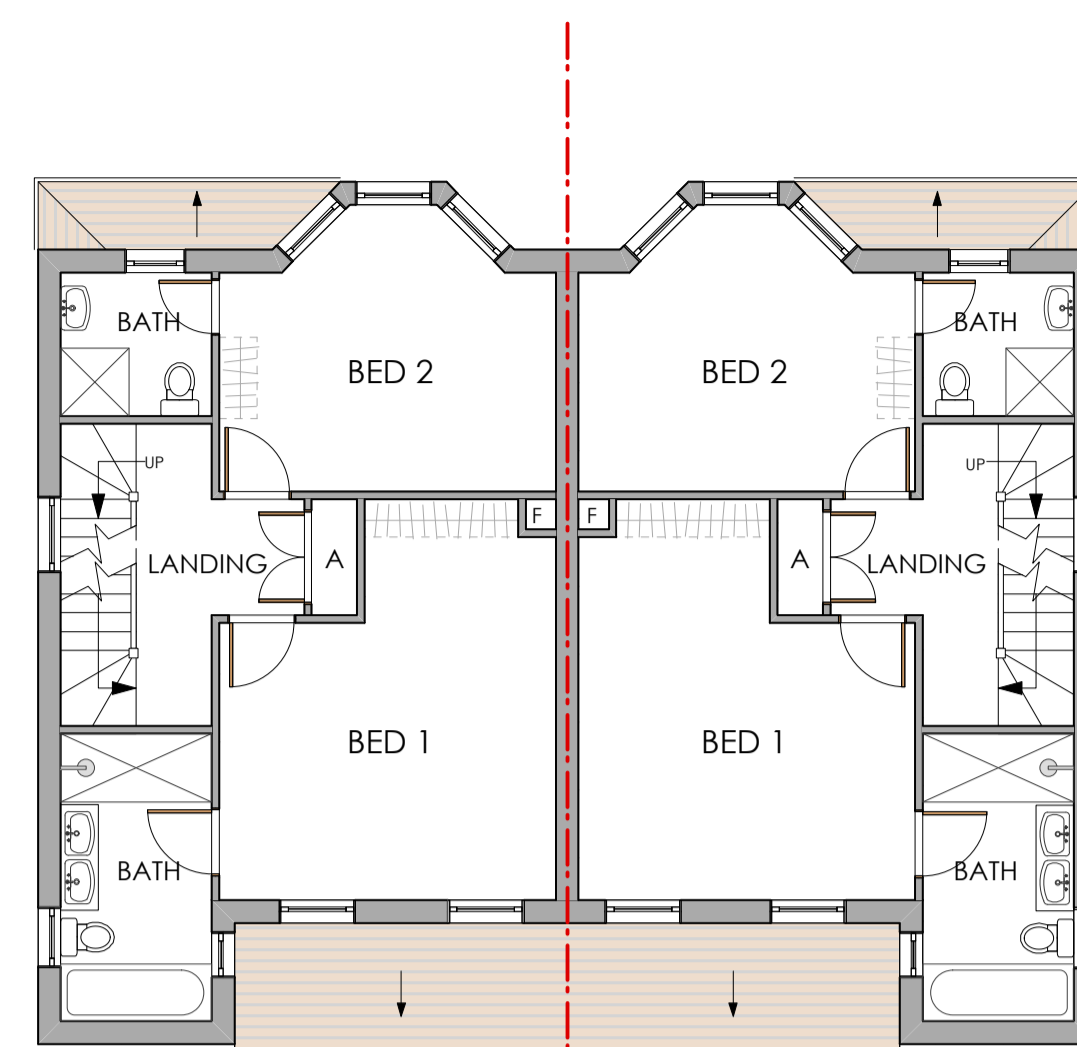
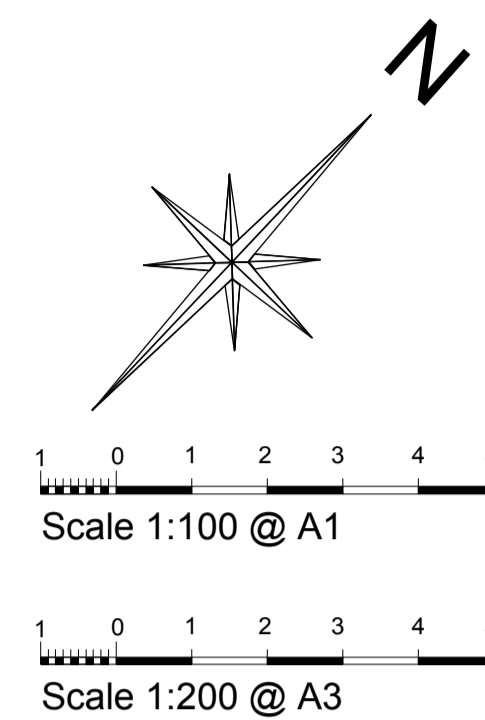
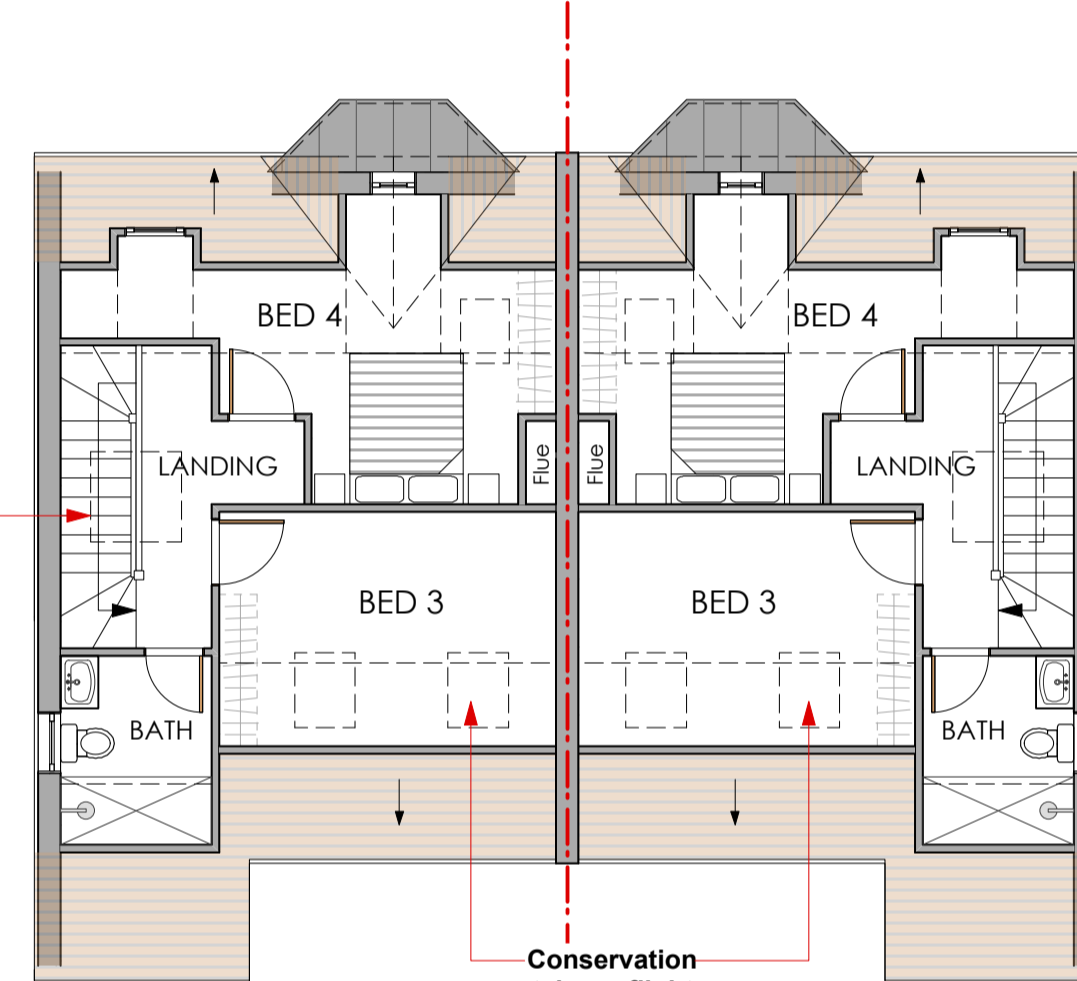
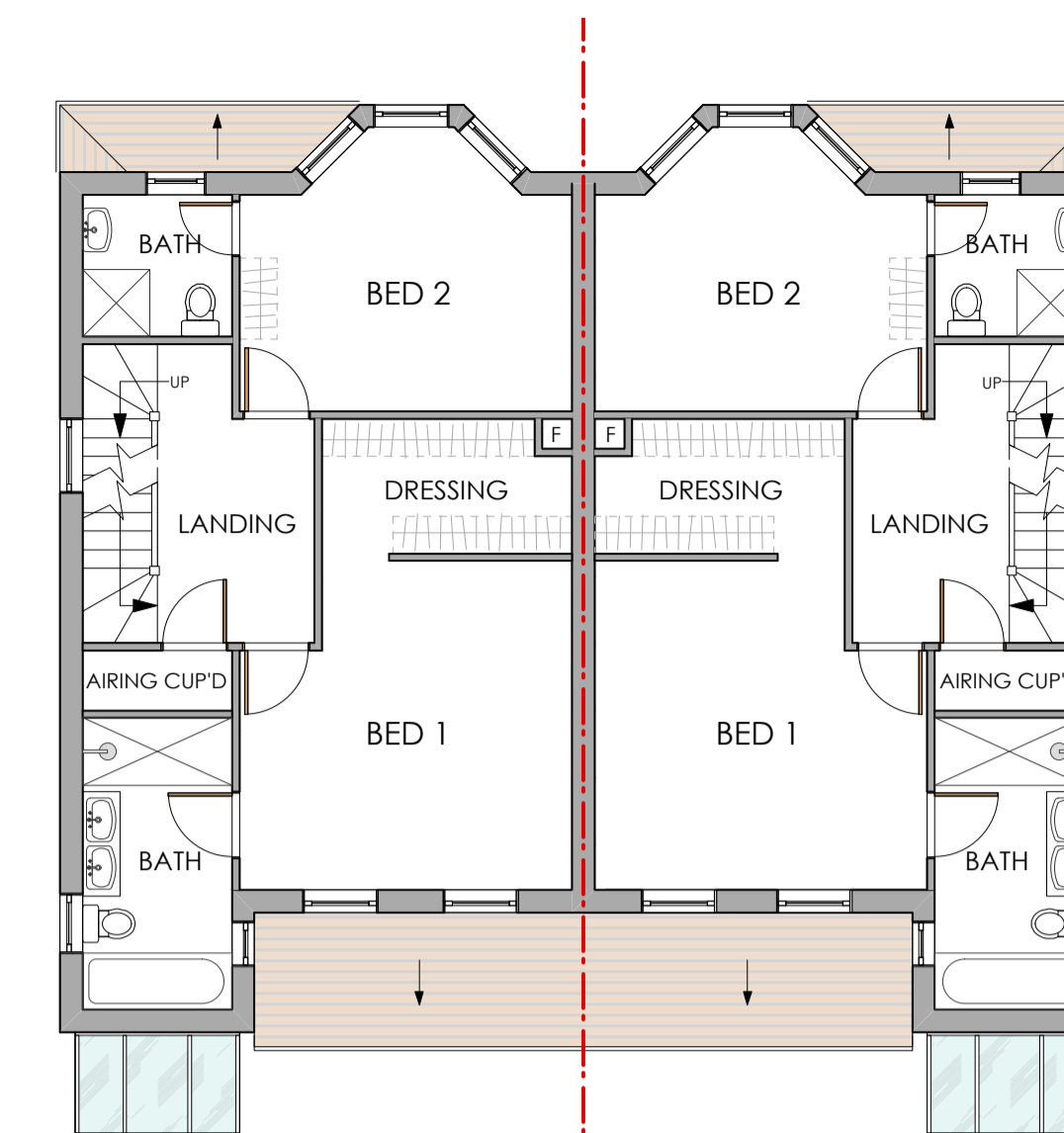


HOUSE A HOUSE B HOUSE C HOUSE D

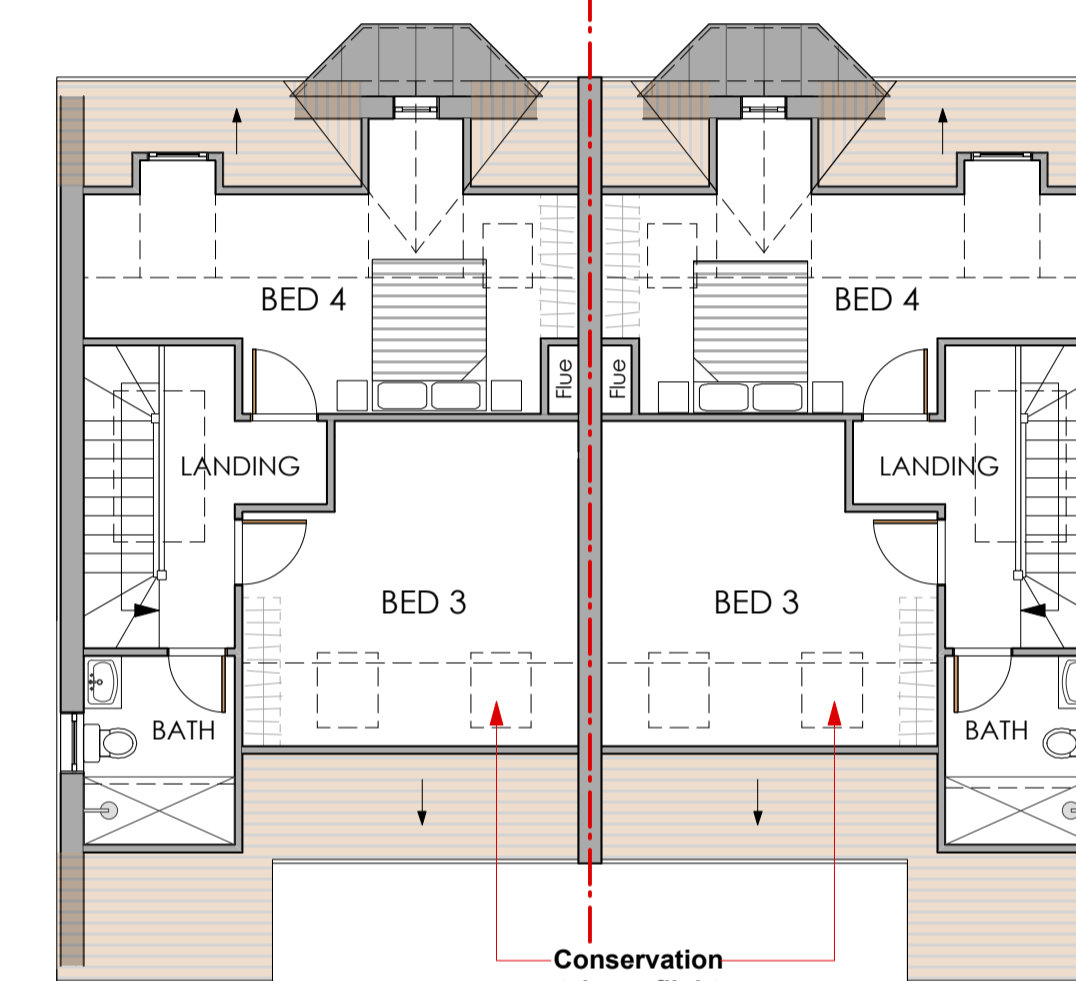
BASEMENT FLOOR PLAN



FIRST FLOOR PLAN



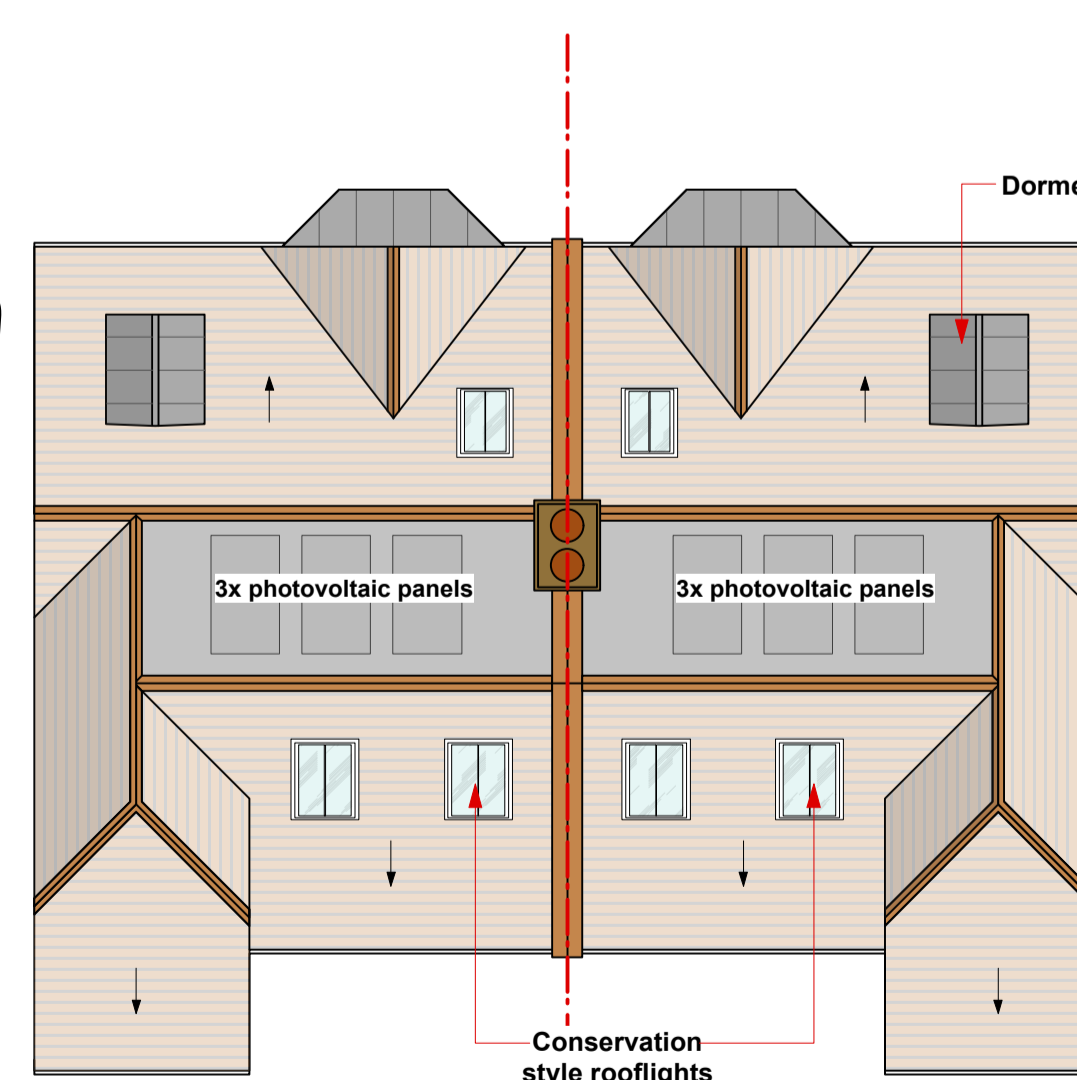
HOUSE A HOUSE B SECOND FLOOR PLAN



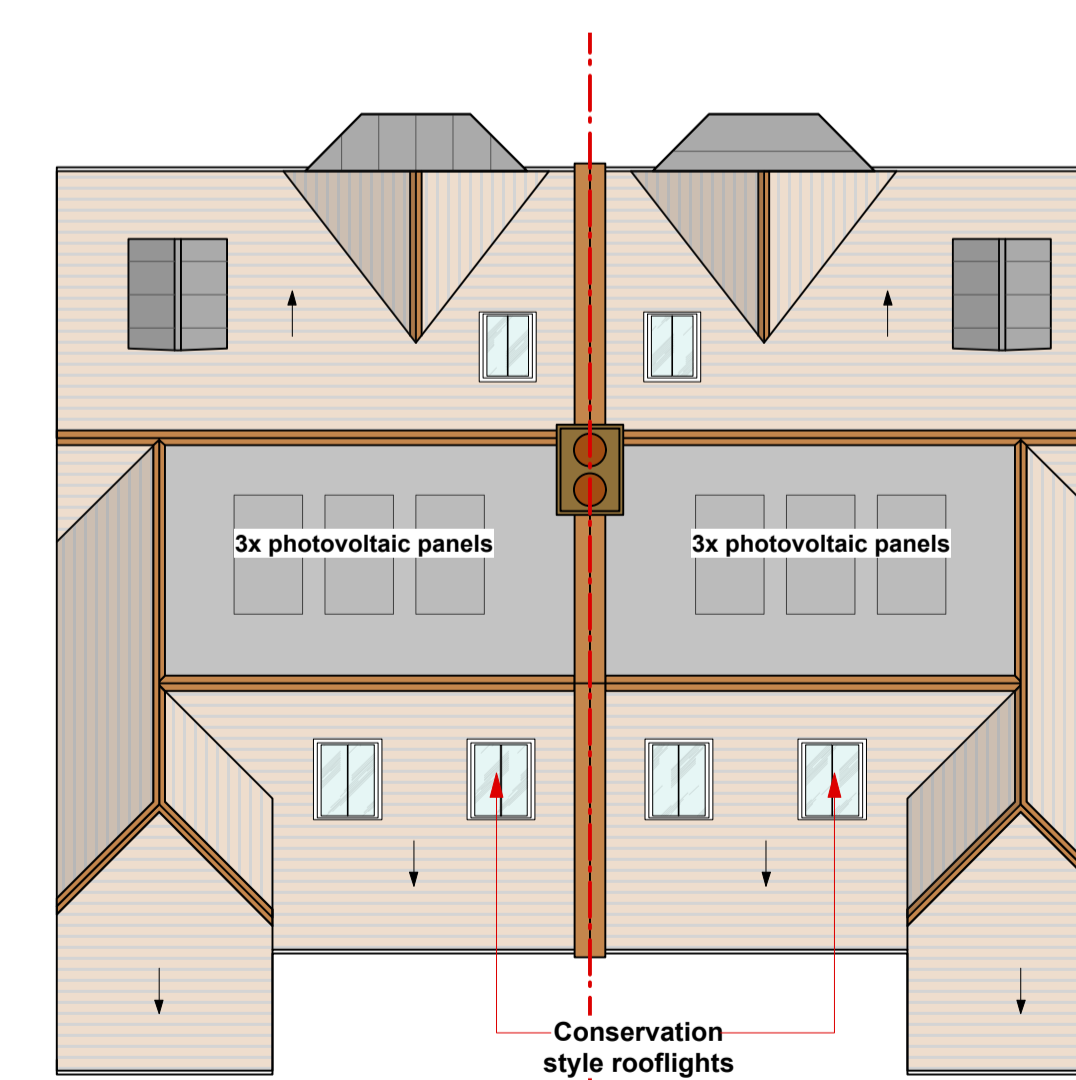
HOUSE C HOUSE D



GROUND FLOOR PLAN



ROOF PLAN



**KEY:**

DENOTES TREE R.P.A (REFER TO TREE REPORT)

**T26**

DENOTES IDENTITY OF TREES ON OR AROUND THE SITE TO BE RETAINED

**NOTE:** T1, T2, T3, T14 have TPO's in place

**HOUSE "A"**  
GIA = 231 SQM

**HOUSE "B"**  
GIA = 231 SQM

**HOUSE "C"**  
GIA = 256 SQM

**HOUSE "D"**  
GIA = 256 SQM

Rev	Date	Revision	By
B	21/08/15	Street elevation updated. Change crossover batch to copper beech	EW
A	20/07/15	Change of new trees to Copper Birch	KR

JOB: 1 Arterberry Road, Wimbledon, SW20

DWG: PROPOSED PLANS

JOB NO: 590

DWG. NO: 590/P01

REVISION: B

SCALE: 1:100 @ A1

DATE: JULY 2015

DRAWN BY: KR

CHECKED BY: HH

DWG. STATUS: **PLANNING**

Do not scale this drawing

All dimensions to be checked on site

Holden Harper copyright reserved

**Holden Harper**  
chartered architects & engineers  
26 High Street, Wimbledon  
London, SW19 5BY  
Telephone: 020 8946 5502  
Email: arch@holdenharper.co.uk